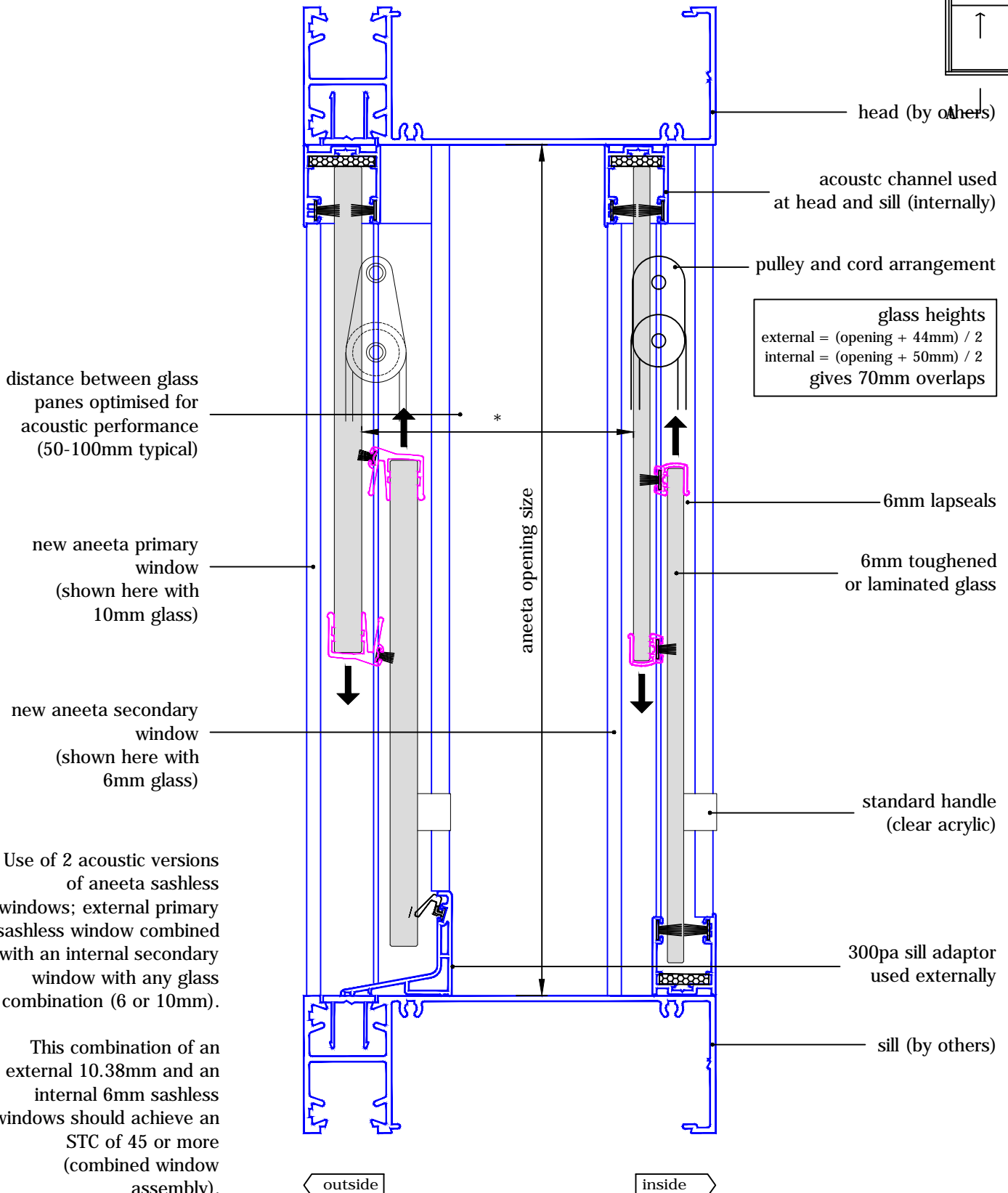
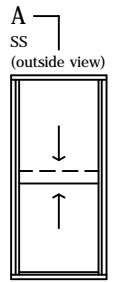


2 pane sashless vertical sliders in aluminium frames

(acoustic versions - 10mm primary & 6mm secondary)

with aluminium covers

vertical section A-A



Use of 2 acoustic versions of aneeta sashless windows; external primary sashless window combined with an internal secondary window with any glass combination (6 or 10mm).

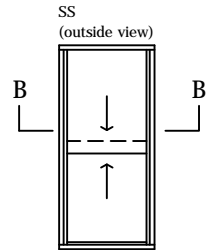
This combination of an external 10.38mm and an internal 6mm sashless windows should achieve an STC of 45 or more (combined window assembly).

2 pane sashless vertical sliders in aluminium frames (acoustic versions - 10mm primary & 6mm secondary)

with aluminium covers
 horizontal section B-B

Use of 2 acoustic versions of aneeta sashless windows; external primary sashless window combined with an internal secondary window with any glass combination (6 or 10mm).

This combination of an external 10.38mm and an internal 6mm sashless windows should achieve an STC of 45 or more (combined window assembly).



new aneeta primary window
 (shown here with 10mm glass)

